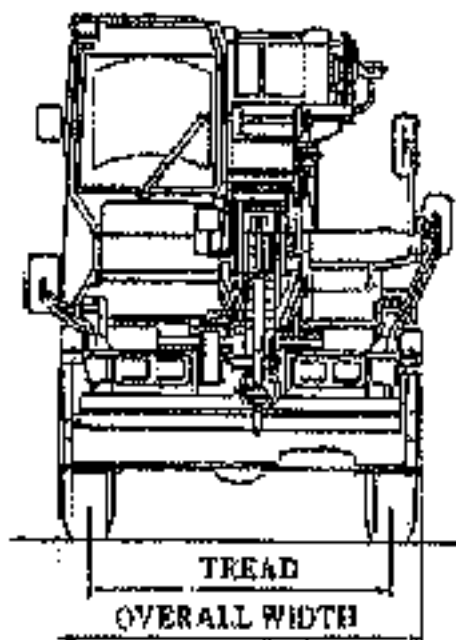
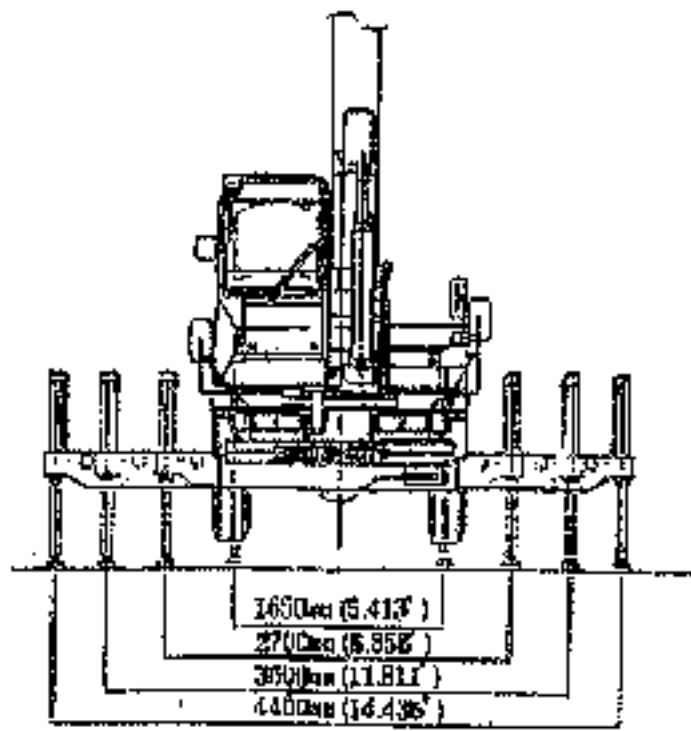
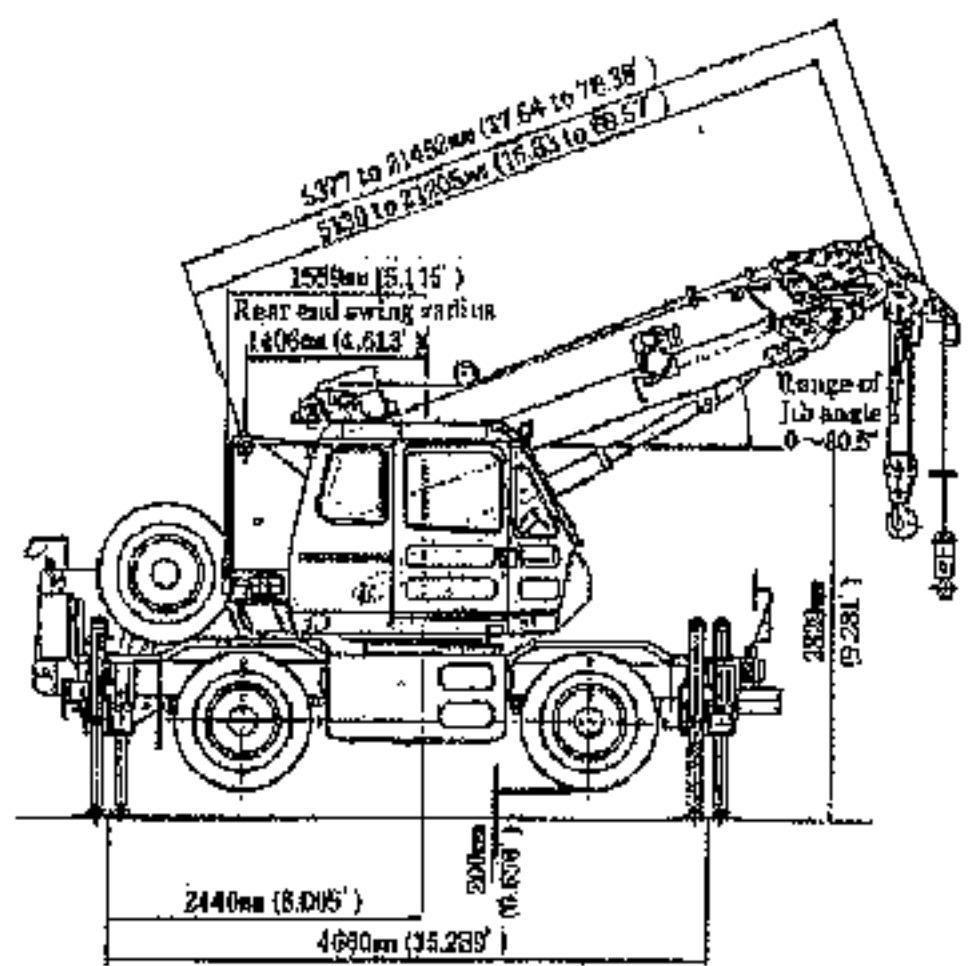
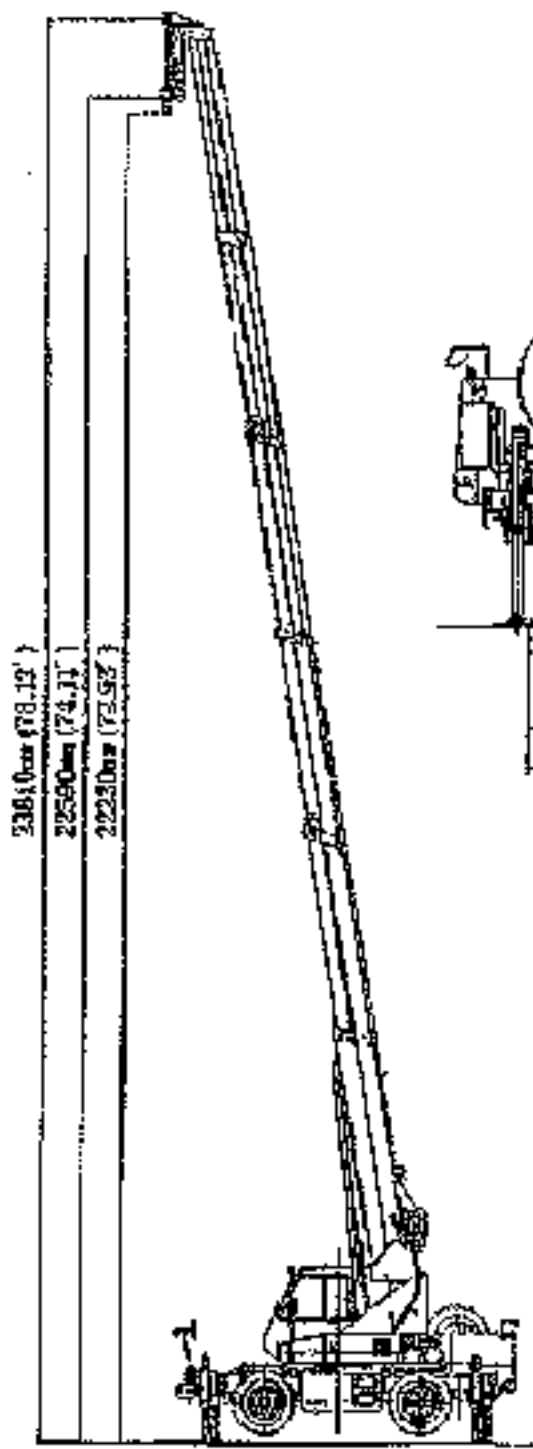


Fig. 1-1

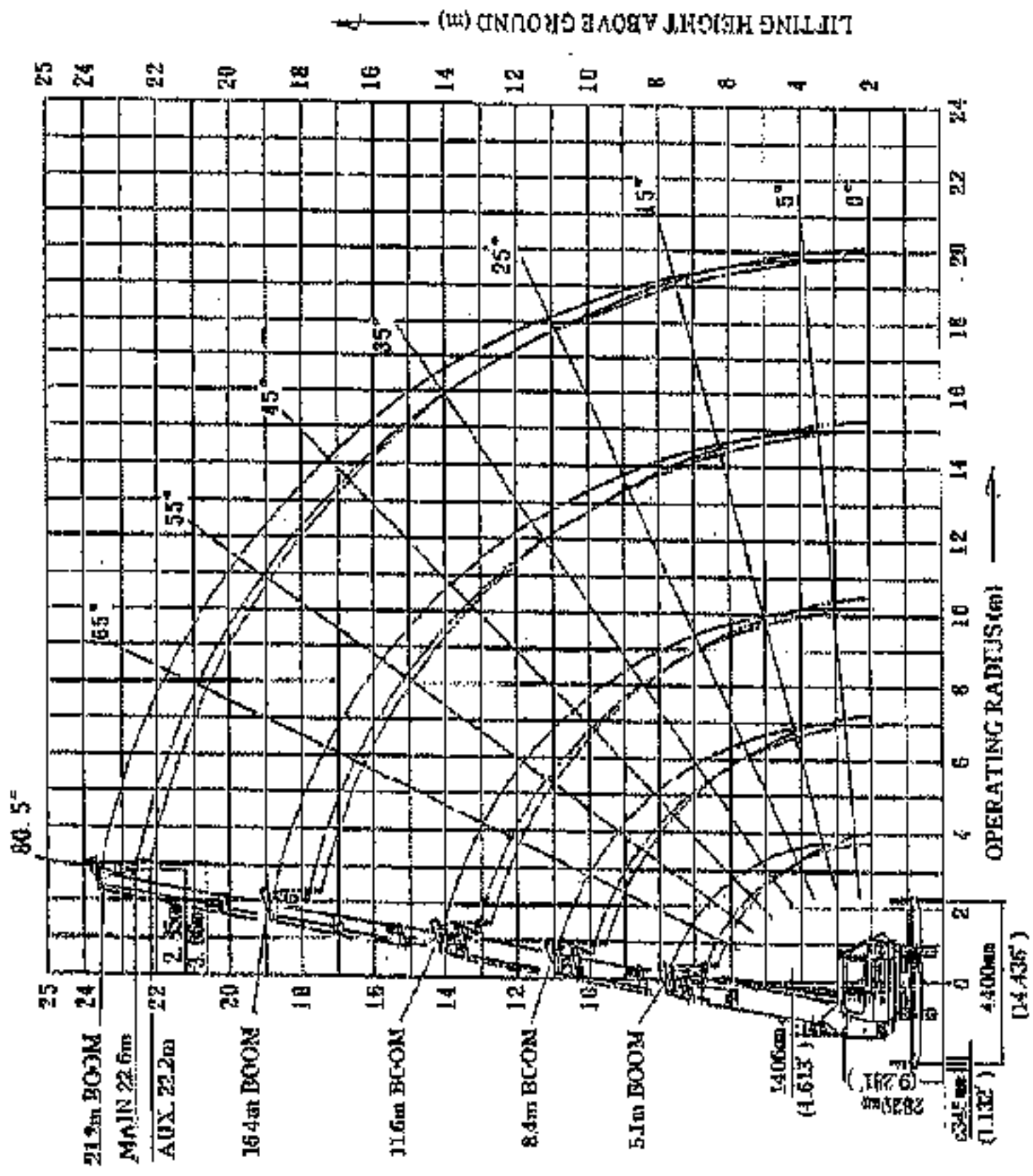
Tire	10.00-20-14PR	273/80R22.5	13/30R20
	10.00R20-14PR		
Overall Height	2760mm (9.055ft)	2730mm (8.957ft)	2745mm (9.003ft)
Tread	1530mm (5.019ft)	1700mm (5.577ft)	1730mm (5.679ft)
Overall width	1990mm (6.545ft)	1975mm (6.480ft)	2030mm (6.660ft)





The followings show the reported values. The values may be different according to the contents of the equipments.

Kind of Carrier		EV2		EV2	
Name and Model		EV2		EV2	
Classifier		EV2		EV2	
Tire		275/80R225		13/80R20	
Tire		10.00R20-14PR		10.00R20-14PR	
Length	m (ft)	←	←	←	←
Width	m (ft)	←	2.080 (6.824)	1.995 (6.545)	←
Height	m (ft)	2.730 (8.957)	2.745 (9.016)	2.760 (9.055)	←
Wheel Base	m (ft)	←	←	←	←
Tread (front)	m (ft)	1.700 (5.577)	1.730 (5.679)	1.680 (5.512)	←
Tread (rear)	m (ft)	1.700 (5.577)	1.730 (5.679)	1.680 (5.512)	←
Road Clearance	m (ft)	0.230 (0.755)	0.245 (0.804)	0.225 (0.738)	←
Total Weight	kg (lb)	11430 (25309)	11580 (25529)	11200 (24602)	←
Front Axle Load	kg (lb)	5680 (12522)	5780 (12699)	5510 (12147)	←
Rear Axle Load	kg (lb)	5750 (12677)	5800 (12810)	5690 (12545)	←
Number of Seating Capacity		←	←	←	←



**(B) RATED LIFTING CAPACITY CHART WITH USE OF OUTRIGGERS**

Standard number of reevings of hook block

Boom length	Used hook	Number of parts
5.1m	4.9ton hook	4
8.4m	4.9ton hook	4
11.8m	4.9ton hook	4
15.4m	4.9ton hook	4
21.3m	4.9ton hook	4

- 1) Load ratings do not exceed 78 percents of tipping load with the machine set horizontally on a firm and level ground, and include weight of hook block(s) and other load handling accessories.

Ratings in [ ] area are based on the machine's structural strength, and others are determined by the machine stability.

Kind of hook	4.9 ton	2.4 ton
Weight	72 kgs (158.7lbs)	25 kgs (55.1lbs)

- 2) Since the operating radius given in the chart includes allowances for laden boom deflection, the machine must be always operated on the basis of actual operating radius.
- 3) The outrigger maximum extended width is 4.4 meters (14.436ft), and the mid-point extended widths are 3.6 meters (11.811ft) and 2.7 meters (8.858ft).
- 4) Ratings in Over Side vary according to the outrigger extended condition. Therefore operation must be based on the rating chart corresponding to each outrigger extended condition.
- 5) When the boom length exceeds the specified length shown in the rating chart, operation must be performed basing on the smaller rating of the specified length or the next longer boom length show.
- 6) Ratings with the use of the auxiliary sheave are the same as the ratings with the boom less 70kgs (154.2lbs), but should not exceed 140kgs (3086.5lbs).
- 7) Free falling operation shall be, as a rule, used when lowering the hook block only. When it is required to free fall a load, the load must not exceed one fifth of the rated load, and sudden brake must be absolutely avoided.

(2) RATED CAPACITY CHART WITH USE OF OUTRIGGERS

Operating Radius (m)	Outriggers fully extended (all around)				Outriggers extended to mid-point (3/4 way)				Outriggers extended to mid-point (1/2 way)				Outriggers minimum extended (over side)				Operating Radius (m)
	11.5m		13.0m		14.5m		16.0m		17.5m		19.0m		20.5m		22.0m		
	beam beam	beam beam	beam beam	beam beam	beam beam	beam beam	beam beam	beam beam	beam beam	beam beam	beam beam	beam beam	beam beam	beam beam	beam beam	beam beam	
1.0	4.90	4.90	4.90	4.90	4.90	4.90	4.90	4.90	4.90	4.90	4.90	4.90	4.90	4.90	4.90	4.90	4.0
1.5	4.90	4.90	4.90	4.90	4.90	4.90	4.90	4.90	4.90	4.90	4.90	4.90	4.90	4.90	4.90	4.90	4.5
2.0	4.90	4.90	4.90	4.90	4.90	4.90	4.90	4.90	4.90	4.90	4.90	4.90	4.90	4.90	4.90	4.90	5.0
2.5	4.90	4.90	4.90	4.90	4.90	4.90	4.90	4.90	4.90	4.90	4.90	4.90	4.90	4.90	4.90	4.90	5.5
3.0	4.90	4.90	4.90	4.90	4.90	4.90	4.90	4.90	4.90	4.90	4.90	4.90	4.90	4.90	4.90	4.90	6.0
3.5	4.90	4.90	4.90	4.90	4.90	4.90	4.90	4.90	4.90	4.90	4.90	4.90	4.90	4.90	4.90	4.90	6.5
4.0	4.90	4.90	4.90	4.90	4.90	4.90	4.90	4.90	4.90	4.90	4.90	4.90	4.90	4.90	4.90	4.90	7.0
4.5	3.87	3.87	3.87	3.87	3.87	3.87	3.87	3.87	3.87	3.87	3.87	3.87	3.87	3.87	3.87	3.87	7.5
5.0	3.37	3.37	3.37	3.37	3.37	3.37	3.37	3.37	3.37	3.37	3.37	3.37	3.37	3.37	3.37	3.37	8.0
5.5	2.97	2.97	2.97	2.97	2.97	2.97	2.97	2.97	2.97	2.97	2.97	2.97	2.97	2.97	2.97	2.97	8.5
6.0	2.68	2.68	2.68	2.68	2.68	2.68	2.68	2.68	2.68	2.68	2.68	2.68	2.68	2.68	2.68	2.68	9.0
7.0	2.14	2.14	2.14	2.09	2.09	2.09	2.09	2.09	2.09	2.09	2.09	2.09	2.09	2.09	2.09	2.09	10.0
8.0	1.76	1.64	1.40	1.40	1.57	1.33	1.33	1.33	1.33	1.33	1.33	1.33	1.33	1.33	1.33	1.33	11.0
9.0	1.40	1.31	1.09	1.09	1.23	1.18	1.18	1.18	1.18	1.18	1.18	1.18	1.18	1.18	1.18	1.18	12.0
10.0	1.29	1.40	1.09	1.09	0.78	0.98	1.09	1.09	0.78	0.98	1.09	1.09	0.78	0.98	1.09	1.09	13.0
11.0	1.18	1.50	0.88	0.88	0.74	0.75	0.81	0.81	0.74	0.75	0.81	0.81	0.74	0.75	0.81	0.81	14.0
12.0	1.03	0.89	0.69	0.69	0.67	0.78	0.78	0.78	0.67	0.78	0.78	0.78	0.67	0.78	0.78	0.78	15.0
13.0	0.85	0.82	0.62	0.62	0.44	0.55	0.55	0.55	0.44	0.55	0.55	0.55	0.44	0.55	0.55	0.55	16.0
14.0	0.69	0.75	0.55	0.55	0.34	0.59	0.59	0.59	0.34	0.59	0.59	0.59	0.34	0.59	0.59	0.59	17.0
15.0	0.55	0.69	0.49	0.49	0.27	0.42	0.42	0.42	0.27	0.42	0.42	0.42	0.27	0.42	0.42	0.42	18.0
16.0	0.59	0.55	0.35	0.35	0.33	0.33	0.33	0.33	0.33	0.33	0.33	0.33	0.33	0.33	0.33	0.33	19.0
17.0	0.55	0.55	0.35	0.35	0.34	0.34	0.34	0.34	0.34	0.34	0.34	0.34	0.34	0.34	0.34	0.34	20.0
18.0	0.49	0.49	0.29	0.29	0.28	0.28	0.28	0.28	0.28	0.28	0.28	0.28	0.28	0.28	0.28	0.28	21.0
19.0	0.35	0.35	0.25	0.25	0.24	0.24	0.24	0.24	0.24	0.24	0.24	0.24	0.24	0.24	0.24	0.24	22.0
20.0	0.25	0.25	0.15	0.15	0.15	0.15	0.15	0.15	0.15	0.15	0.15	0.15	0.15	0.15	0.15	0.15	23.0
21.0	0.15	0.15	0.05	0.05	0.05	0.05	0.05	0.05	0.05	0.05	0.05	0.05	0.05	0.05	0.05	0.05	24.0
Outrigger angle						17°				35°	45°				57°		Outrigger angle

## WITHOUT USE OF OUTRIGGERS

- 1) Load ratings are the approved maximum lifting capacity of this machine with the specified air pressure of the tires on a firm and level ground, and include weight of hook block (s) and other load handling accessories.

Kind of hook	4.9 ton	1.4 ton
Weight	22 kg (48.7 lbs)	25 kg (55.1 lbs)

### Rated lifting capacity chart

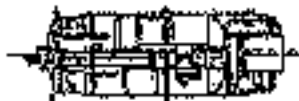
	Lifting over front only
Boom length	5.1m to 3.4m
Operating radius	5.0m maximum
Rated lifting capacity	1.0 ton

- 2) Since the operating radius given in the chart includes allowances for laden boom deflection, the machine must be always operated on the basis of the actual operating radius.
- 3) Over side lifting can not be done. Do work by the over front only.

### Air pressure of tire (kg/cm<sup>2</sup>)

Size of tire	Front Wheel	Rear Wheel
10.00-20-14PR	6.75	6.75
16.00R20-14PR	7.25	7.25
275/60R22.5	8.25	8.25
13/80R20	5.90	5.90

0-47 (1100)



- 4) Neither of boom operation and free fall operation should be done.
- 5) When performing stationary lifting, be sure to engage the parking brake (and auxiliary brake for work).
- 6) When performing picking and carrying operation, be sure to place the high speed/low speed selector switch in the ON (low range) position.
- 7) When performing picking and carrying a load, hold the load near the ground, and travel within 2km (1.24miles) per hour of speed not to allow the load to be swing. Especially be careful for cornering, sudden start and sudden stop.
- 8) Do not perform any crane operation while travelling with a load suspended.

## WITH USE OF OUTRIGGERS

- 2) Load ratings do not exceed 78 percent of tipping load with the machine set horizontally on a firm and level ground, and include weight of hook block(s) and other load handling accessories.

Ratings in  area are based on the machine's structural strength, and others are determined by the machine stability.

Kind of hook	<input type="checkbox"/> ton	<input type="checkbox"/> ton
Weight	<input type="checkbox"/> kg (167.5lbs)	<input type="checkbox"/> kg (68.5lbs)

Standard number of pieces of hook block

Boom length	Used hook	Number of parts
5.19m	7ton hook	4
8.55m	7ton hook	4
11.95m	7ton hook	4
16.39m	7ton hook	4
21.21m	7ton hook	4

- 3) Since the operating radius given by the chart includes allowance for laden boom deflection, the machine must be always operated on the basis of the actual operating radius.
- 4) The outrigger maximum extended width is 4.4 meters (14.436ft), and the side-point extended widths are 3.0 meters (9.841ft) and 2.7 meters (8.858ft).
- 5) Ratings in Over Side vary according to the outrigger extended condition. Therefore, operation must be based on the rating chart corresponding to each outrigger extending condition.
- 6) When the boom length exceeds the specified length shown in the rating chart, operation must be performed basing on the smaller rating of the specified boom length or the next longer boom length shown.
- 7) Ratings with the use of the auxiliary sheave are the same as the ratings with the lower line 700kg (154.3lbs), but should not exceed 1400kg (3080.5lbs).
- 8) Free falling operation shall be, as a rule, used when lowering the hook block only. When it is required to free fall a load, the load should not exceed one fifth of the rated load, and sudden brake must be absolutely avoided.





## WITHOUT USE OF DIFFERENTIALS

- 1) Load ratings are the approved maximum lifting capacity of this machine with the specified air pressure of the tires on a firm and level ground, and include weight of hook block (a) and other load handling accessories.

Kind of hook	7' ton	3' ton
Weight	76 lbs (34.5 kg)	25 lbs (11.3 kg)

## Rated lifting capacity chart

	Lifting over front only
Boom length	5.10 to 8.17m
Operating radius	5.0m maximum
Rated lifting capacity	1.0 ton

- 2) Since the operating radius given in the chart includes allowance for laden boom deflection, the machine must be always operated on the basis of the actual operating radius.
- 3) One side lifting cannot be done. Do work by the over front only.



## Air pressure of tire (kg/cm<sup>2</sup>)

Size of tire	Front wheel	Rear wheel
10.00-20-14PR	6.75	6.75
10.00-20-14PR	7.25	7.25
275/80R22.5	6.25	6.25
13/80R20	6.00	6.00

- 4) Neither of boom operation and free fall operation should be done.
- 5) When performing stationary lifting, be sure to engage the parking brake (and auxiliary brake for work).
- 6) When performing loading and unloading operation, be sure to place the high speed/low speed selector switch in the ON (low range) position.
- 7) When performing picking and carrying a load, hold the load near the ground, and travel within 2km (1.24 miles) per hour of speed out to allow the load to be swung. Especially be careful for starting, sudden start and sudden stop.
- 8) Do not perform any crane operation while traveling with a load suspended.

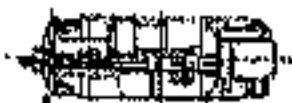
## WITHOUT USE OF OUTRIGGERS

- 1) Load ratings are the approved maximum lifting capacity of this machine with the specified air pressure of the tires on a firm and level ground, and include weight of hook block (b) and other load handling accessories.

Kind of hook	17 lbs	14 lbs
Weight	75 lbs (187 lbs)	25 lbs (55 lbs)

- 2) Since the operating radius given in the chart includes allowances for luller boom deflection, the machine must be always operated on the basis of the actual operating radius.
- 3) Over side lifting cannot be done. Do work by the over front only.

Over load



- 4) Neither of boom operation and free fall operation should be done.
- 5) When performing stationary lifting, be sure to engage the parking brake (and auxiliary brake for work).
- 6) When performing picking and carrying operation, be sure to place the high speed/low speed selector switch in the ON (low range) position.
- 7) When performing picking and carrying a load, hold the load near the ground, and travel with a 2 1/2 (1.24 miles) per hour of speed not to allow the load to be swung. Especially be careful for cornering, sudden start and sudden stop.
- 8) Do not perform any crane operation while traveling with a load suspended.

## Rated lifting capacity chart

	Lifting over front only
Boom length	5.1m to 8.4m
Operating radius	5.0m maximum
Rated lifting capacity	1.0 ton

## Air pressure of tire (kg/cm<sup>2</sup>)

Size of tire	Front wheel	Rear wheel
10.00-20-14PR	6.75	6.75
10.00R20-14PR	7.25	7.25
275/60R22.5	6.25	6.25
13/R0R20	6.60	6.60