

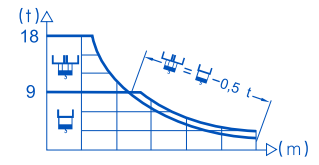
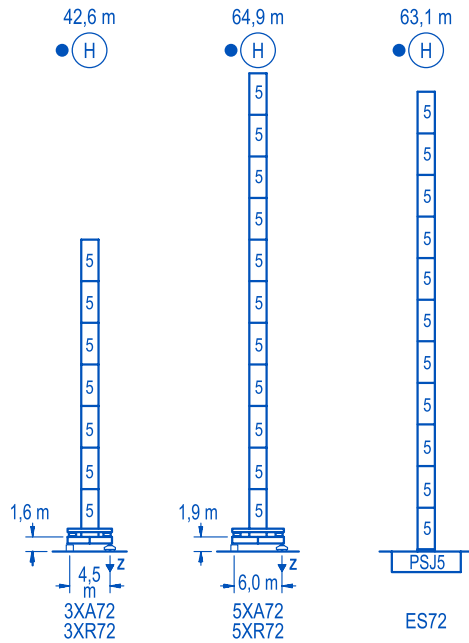
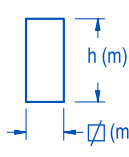


R																
74	14,3	15	20	25,8	25,9	30	34	40	44	50	54	60	64	70	74	m
	18000	17005	12165	9000	9000	7660	6660	5545	4980	4300	3930	3475	3220	2890	2700	kg
70	14,6	15	20	26,4	26,7	30	34	40	44	50	54	60	64	70	m	
	18000	17460	12500	9000	9000	7920	6890	5745	5155	4455	4075	3605	3340	3000	kg	
64		15,7	20	25	28,4	29,1	34	40	44	50	54	60	64	m		
	18000	13585	10470	9000	9000	7580	6325	5685	4920	4505	3990	3700	kg			
60		15,6	20	25	28,2	29,1	34	40	44	50	54	60	m			
	18000	13480	10390	9000	9000	7585	6335	5695	4930	4515	4000	kg				
54		15,7	20	25	28,5	29,6	34	40	44	50	54	m				
	18000	13610	10500	9000	9000	7725	6450	5800	5020	4600	kg					
50		16,3	20	25	29,7	31,0	34	40	44	50	m					
	18000	14255	11010	9000	9000	8140	6800	6115	5300	kg						
44		18,2	20	25	30	33,1	35,0	40	44	m						
	18000	16115	12480	10100	9000	9000	7775	7000	kg							
40		18,5	20	25	30	33,8	35,9	40	m							
	18000	16490	12775	10345	9000	8000	kg									



Heights under hook
吊钩高度 \varnothing 2,0 m

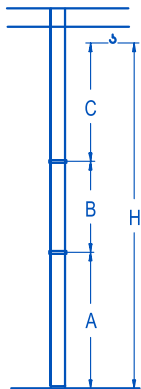


	N°	Ref.	\varnothing	h
	5	SJ25	2,0	5,5

R. max. 最大反力	In operation 工作状态	3XR72.....105,9 t 5XR72.....113,6 t
	Out of service 非工作状态	3XR72.....90,3 t 5XR72.....150,3 t

Other wind zones or additional hook heights on request
其他风区或另外的吊钩高度请咨询

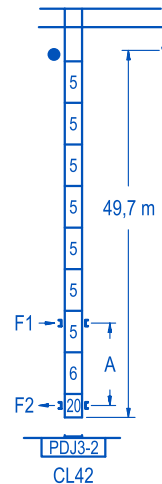
Braced crane
塔机附着

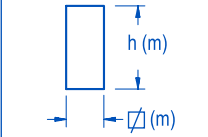


	3XA72	5XA72
A max	29,1	51,4
B max	-	33,0
C max	52,0	46,5
H max	81,1	108,6

	ES72
A max	49,6
B max	-
C max	46,5
H max	96,1

Internal climbing crane
内爬塔机

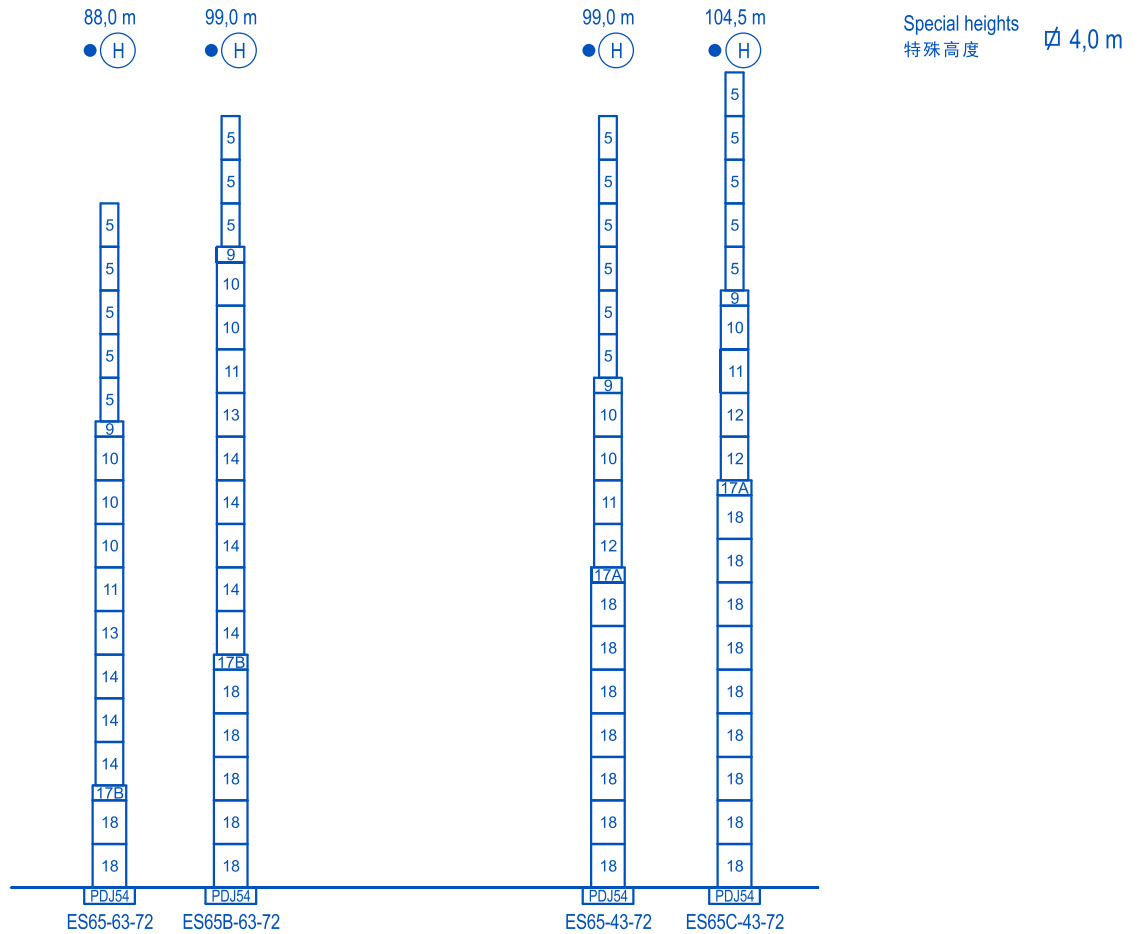
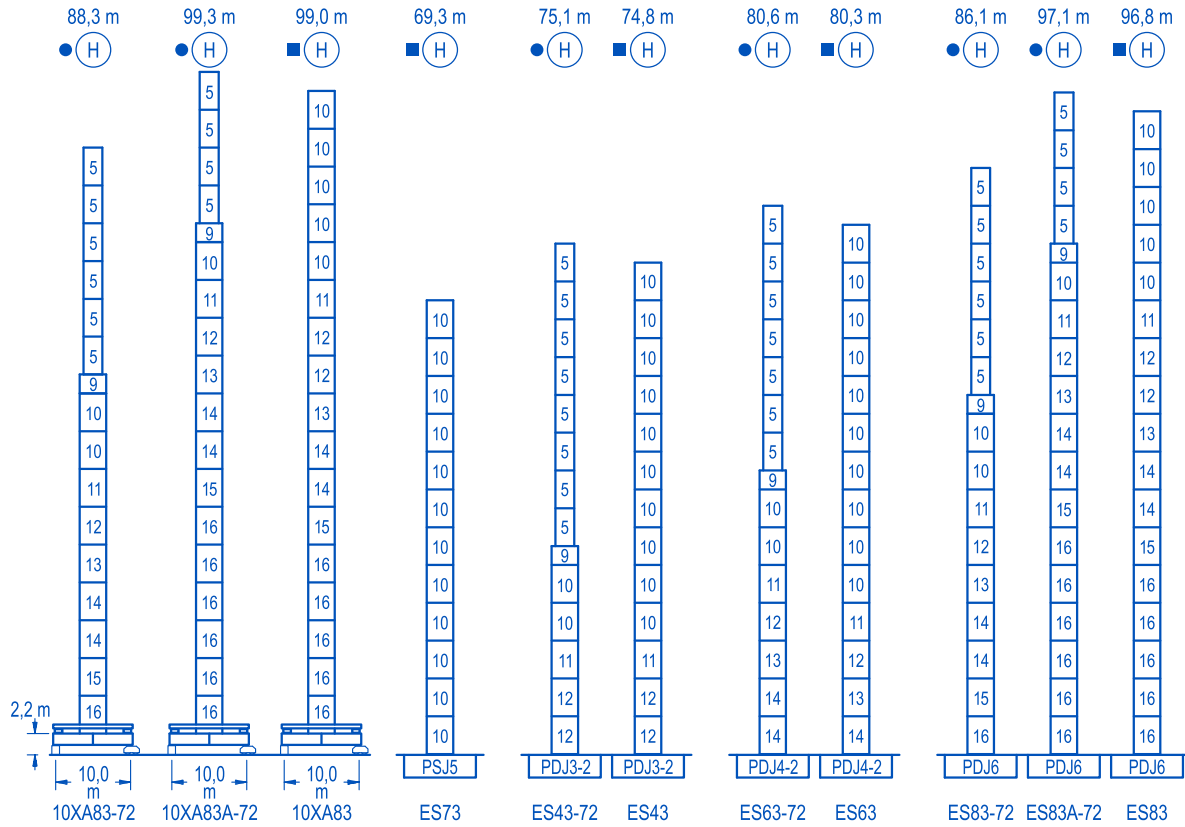


	N°	Ref.	\varnothing	h
	5	SJ25	2,0	5,5
	6	TDJ23A	2,0	5,5
	20	CLDJ23A	2,0	3,1

Other wind zones or additional hook heights on request
其他风区或另外的吊钩高度请咨询

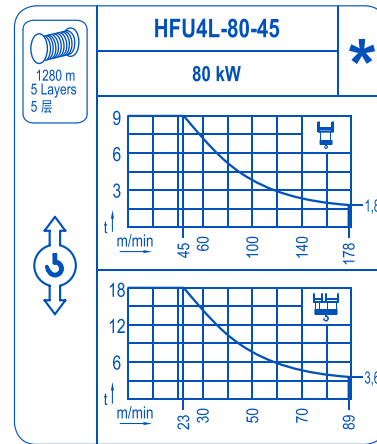
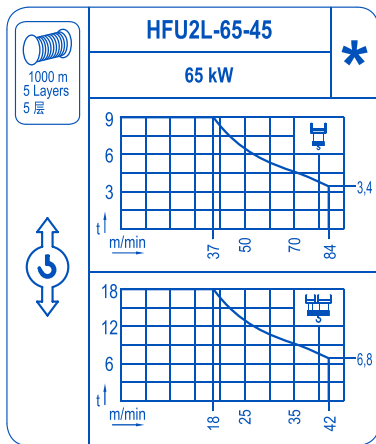
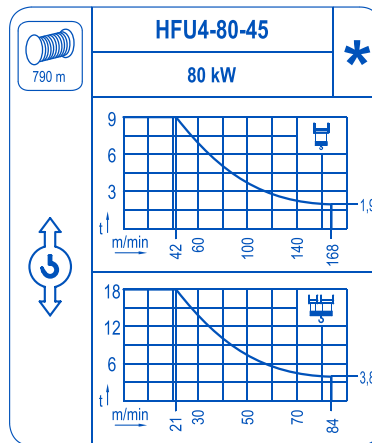
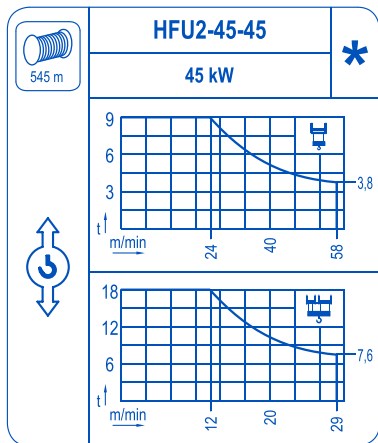
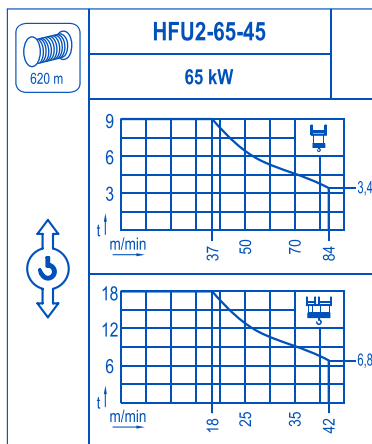
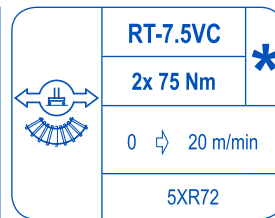
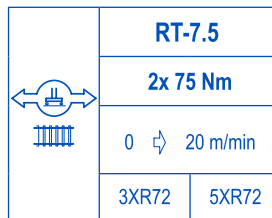
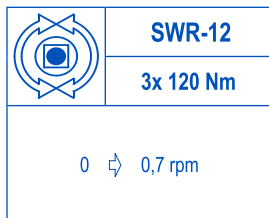
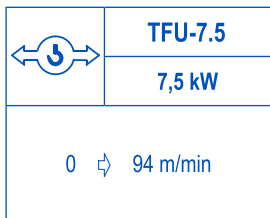
Climbing inside building on request
使用内爬结构请咨询

Special heights
特殊高度 \varnothing 2,5 m



	N°	Ref.	\varnothing	h	N°	Ref.	\varnothing	h	N°	Ref.	\varnothing	h	N°	Ref.	\varnothing	h
		5	SJ25	2,0	5,5	12	DJ33	2,5	5,5	16	D36	2,5	5,5			
	9	TMSJ35SJ25	2,5	1,0	13	TDJ34	2,5	5,5	17A	TMDJ54/PMDJ3-2	4,0	1,5				
	10	SJ35	2,5	5,5	14	DJ34	2,5	5,5	17B	TMDJ54/PMDJ4-2	4,0	1,5				
	11	TDJ33A	2,5	5,5	15	TD36A	2,5	5,5	18	DJ54	4,0	5,5				

Other wind zones or additional hook heights on request
其他风区或另外的吊钩高度请咨询



For mechanisms with high drum capacity, request wire rope loads deduction.
使用大容量绳机构，起升载荷需考虑扣除钢丝绳的重量。

POWER / 功率				Operating voltage / 工作电压	Generator / 发电机
Hoist / 起升机构	Trolley / 变幅机构	Slewing / 回转机构	Travel / 行走机构		
HFU2-45-45	TFU-7.5	(3x) SWR-12	(2x) RT-7.5	380 V 3ph 50 Hz	160 KVA
HFU2-65-45					200 KVA
HFU4-80-45					250 KVA

Optional
选项

*